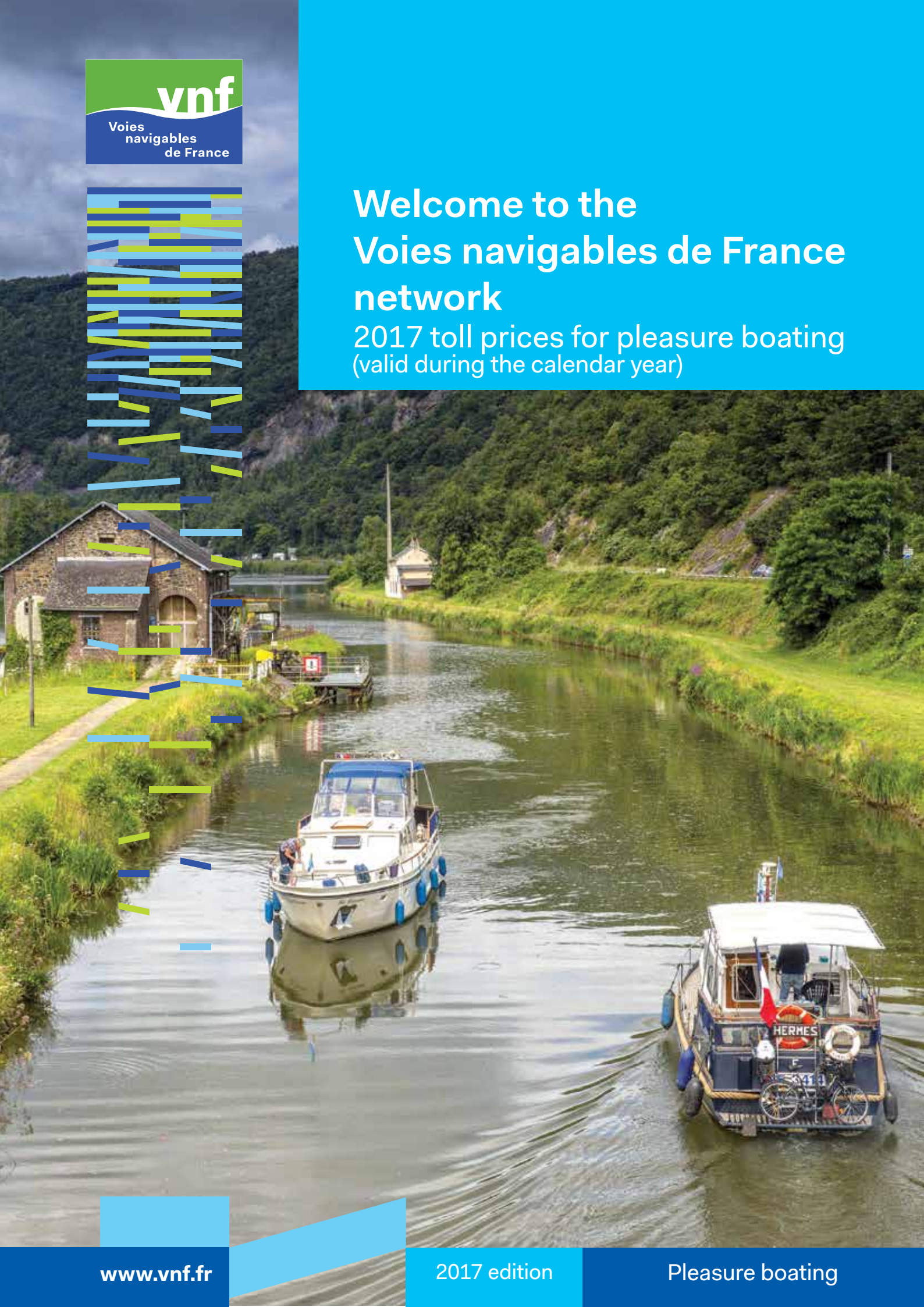


Welcome to the Voies navigables de France network

2017 toll prices for pleasure boating
(valid during the calendar year)



2017 toll prices for pleasure boating

(valid during the calendar year)

Package	No engine	I but under 8 ML	II 8 ML and over but under 11 ML	III 11 ML and over but under 14 ML	IV Over 14 ML
1 Day⁽¹⁾	-	€2.8 x Length + €11.0	€2.8 x Length + €16.6	€2.8 x Length + €22.0	€2.8 x Length + €27.3
7 Days⁽²⁾	-	€3.8 x Length + €15.0	€3.8 x Length + €22.8	€3.8 x Length + €30.3	€3.8 x Length + €37.7
Leisure⁽³⁾	-	€7.4 x Length + €27.2	€7.4 x Length + €39.6	€7.4 x Length + €51.9	€7.4 x Length + €66.3
Freedom⁽⁴⁾	€40.3	€8,3 x Length + €85.8	€8,3 x Length + €196.9	€8,3 x Length + €375.1	€8,3 x Length + €489.7

(1) issued for 1 specified day, this rate offers total flexibility for planning trips.

(2) issued for 7 days for specific dates (consecutive).

(3) issued for 30 consecutive days for specific dates (start date and expiry date). This package allows those who prefer longer trips to enjoy 30 days' boating.

(4) issued for the calendar year (from 1 January to 31 December). The Freedom package offers unrestricted access, to use the waterways whenever you wish, throughout the year.

In accordance with the French Transport Code, prices are calculated on the basis of the period of using the network and the characteristics of the boat. They are rounded up to the nearest decimal point.

Calculated as follows: A variable amount, depending on the duration of network use and the specifications of the boat, defined by its length (value expressed in Euros x boat length quoted on registration certificate) + a fixed rate depending on the level of access to the network).

A 17% reduction is applied solely for "Freedom packages" passes bought by 31 March 2017 at the latest.

Fees are payable cash.

Please send all correspondence concerning the sale of toll stickers to the following address:
contacts.vpel@vnf.fr



Toll stickers: How and where can you buy them?

On the Internet (offer valid for non-professional sailors only, at the normal price).

Payment by debit card (Visa, Eurocard, Mastercard) via a secure payment site, or **in cash, cheque** (made out in euros for European Union nationals) at the counter at the points of sale indicated below.

The following details must be provided at the counter. They are also required when opening a customer account on the Internet: the owner's contact details (surname, forename, address, phone number, email address), the boat details (registration number or, failing this, the series, the name of the boat, width, length, motor horsepower).

N.B.: a photocopy of the navigation licence, boat permit or French registration certificate, as well as proof of the motor horsepower will be required when buying at the counter.

Upon payment of the toll, you will be issued with a receipt and "vignette" or toll sticker, which you will be required to show in the event of an inspection. The toll sticker should be displayed at the front of the boat, on the starboard side, in such a way that it is visible from the outside under any circumstances. Inspections may be carried out at any point on the network, either by VNF-certified agents (Decree 93-1243 JO dated 19/11/1993), or by law enforcement agencies. Any non-compliance will be reported to the authorities. Offenders are liable to pay a fine, as stipulated by law, and may, under certain conditions, be offered a settlement fine, subject to approval by the public prosecutor.

**The toll sticker must be fixed in front of the boat, on the starboard beam,
so that it's visible from the outside in any circumstances**

Points of sale

ARMENTIÈRES*

Écluse d'Armentières - 59 280
Tel.: +33 (0)3 20 77 15 67

BERLAIMONT*

Écluse Berlaimont - 59 145
Tel.: +33 (0)3 27 58 81 70

BÉTHUNE

175, rue Ludovic Boutleux
CS 30820 - 62 408 Cedex
Tel.: +33 (0)3 21 63 24 30
From Monday to Friday
From 10am to midday - 2pm to 4pm

COMPIÈGNE

Unité territoriale d'itinéraire Seine-Nord
2, boulevard Gambetta
BP 20053 - 60321
Tel.: +33 (0)3 44 92 27 33
From Monday to Thursday
From 9am to midday - 1.30pm to 4pm
Fridays
From 9am to midday - 1.30pm to 4pm
Please contact the board by phone before traveling.

DUNKERQUE

Terre-Plein du jeu de Mail
BP 1008 - 59375
Tel.: +33 (0)3 28 58 71 25
From Monday to Friday
From 9am to 11.30am - 2.15pm to 4pm

FRONTIGNAN

Pointe Caramus
BP 90071 - 34111
Tel.: +33 (0)4 67 46 65 84
From Monday to Thursday
From 8.30am to 11.30am - 2pm to 4pm

GIVET*

Écluse 59 des 4 cheminées
- 08 600 - Tel. : +33 (0)3 24 41 26 73

LILLE

37, rue du Plat - 59034
Tel.: +33 (0)3 20 15 49 70
Monday, Wednesday and Friday
From 9.30am to 11.30am - 2pm to 4pm

NANCY

169, rue Charles III
CS 80062 - 54036 cedex
Tel.: +33 (0)3 83 17 01 01
From Monday to Friday
From 9am to 11.30am - 2pm to 4pm

NARBONNE*

Écluse de Gua - 11 100
Tel.: +33 (0)4 68 42 23 27

NIFFER*

Écluse principale de Niffer
12, rue de Schlierbach - 68680
Tel.: +33 (0)3 89 74 57 44
Every day including
Sundays and public holidays
From 7am to 11.30am - 1.30pm to 7pm

PARIS

18, quai d'Austerlitz - 75013
Tel.: +33 (0)1 44 06 63 60
From Monday to Friday
From 9am to 12pm - 2pm to 4.30pm

QUESNOY-SUR-DEÛLE*

Nouvelle écluse de Quesnoy
- 59890
Tel.: +33 (0)3 20 39 87 67
From Monday to Saturday
From 6.30am to 8.30pm
Sundays from 9am to 6pm

ROUEN

66, avenue J. Chastellain - 76000
Tel.: +33 (0)2 32 08 31 70
From Monday to Friday
From 9am to midday - 2pm to 4pm
Closed on Fridays
even weeks (based on the week numbers in the year)

SARREGUEMINES

1, rue de Steinbach - 57200
Tel.: +33 (0)3 87 98 11 15
From Monday to Thursday
From 8am to midday - 1pm to 5pm
Fridays
From 8am to midday - 1pm to 4pm

SARREGUEMINES*

Écluse 27 - 57200
Tel.: +33 (0)3 87 98 13 47
From 8.30am to 6.30pm every day
in the peak season

SEURRE

Centre d'exploitation
Rue de la perche à l'oiseau - 21250.
Tel.: +33 (0)3 80 20 84 40
From Monday to Friday
From 9am to midday - 2pm to 4.30pm

ST-QUENTIN

44, rue du Gouvernement - 02100
Tel.: +33 (0)3 23 05 73 80
From Monday to Friday
From 9.30am to 11.30am

STRASBOURG

Europe Boat trading
Quai des Belges
BP16 - 67064 cedex
Tel.: +33 (0)3 88 61 26 78
From Monday to Friday
From 8.30am to 12am - 2pm to 6pm
Local service port

THIONVILLE*

"Service spécial des Péages sur la Moselle" (Special Moselle Toll Department) - Route de la Digue
Terre-plein de l'écluse
Robert Schuman - 57100
Tel.: +33 (0)3 82 88 22 80
From Monday to Friday
From 6am to 7.30pm
Saturdays, Sundays and public holidays from 9am to 5.30pm

TOULOUSE

2, port St-Étienne - BP 7204
31073 Cedex 7
Tel.: +33 (0)5 61 36 24 38
From Monday to Friday
From 10am to midday - 2pm to 4pm

TRITH-SAINT-LEGER*

Écluse de Trith - 59125
Tel.: +33 (0)3 27 34 33 56

VOLGELSHEIM*

Écluse du Rhin - Port Rhenan - 68600 - Tel. : +33 (0)3 89 72 54 33

WAZIERS

16, route de Tournai - 59119
Tel.: +33 (0)3 27 94 55 70
From Monday to Friday
From 9am to 11.30am - 2.15pm to 4pm

*Open when locks are operating.
You are advised to contact the employee in charge of selling toll stickers before sailing in order to check opening times.

Regulation

ENSURING YOU HAVE THE NECESSARY PAPERWORK FOR THE BOAT AND FOR SAILING IT

- You want to take the inland waterway test;
- You have lost your licence and would like to obtain a copy;
- You have a licence for sea sailing and you would like to obtain the waterway licence;
- You want to be sure your boat is compliant with the regulations in force;
- You are a foreigner and you want to know if your licence is valid in France;
- You have bought a boat abroad and want to have it registered in France...

For all queries concerning rules and regulations (boat and licence paperwork), contact the waterway sailing authority or www.developpement-durable.gouv.fr.

PAYING TOLL FEES

The toll must be paid by all pleasure craft owners*. The following boats are exempt: boats equal to or less than five metres long equipped with a motor with less than 9.9 actual HP (i.e. 7.29 Kw), as well as all boats used by certain public services (Decree of 26/12/96). The toll is due whenever the boat sails on the canals entrusted to VNF in accordance with the regulations in force. It enables normal use of the public waterways.

“Sailing” means moving the boat, whether it passes through locks or not. With regard to leisure sailing, water-based activities, specific speedboat-related activities such as waterskiing, jet-ski... you must check the rules governing sailing in the specific area with the local services on the Internet.

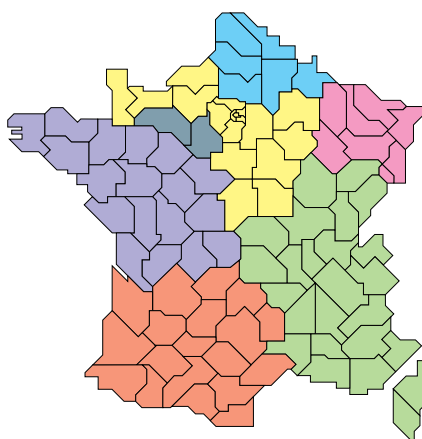
In application of the terms and conditions of sales (Board Meeting of 23/06/11), the sailing tax shall not be exchanged, reimbursed, or cancelled and does not exempt the owner from:

- payment of certain exceptional services, such as sailing through underground sections by means of a towed convoy, using lifts, water slopes... or passing through locks outside sailing times, special structures.
- mooring rights, in particular in ports or on certain specially-developed wharfs providing special services to sailors.

Further details can be found on the VNF website: www.vnf.fr - “La Capitainerie / Vignette plaisance” (The Harbour Master’s Office / Sailing Toll Sticker) Section

*“Code des transports” (French Transport Code) – Decision of the VNF Board of Directors of 29/9/2016.

Map showing waterway sailing authorities



DDTM de la Seine-Maritime et de l'Eure
Service plaisance
Cité administrative
2, rue Saint-Sever
76032 ROUEN cedex
Tél. : 02 35 58 53 36 - duplicatas : 02 35 58 53 48
ddtm-dml-gmep@seine-maritime.gouv.fr

DDTM du Nord
Délégation à la mer et au littoral
et navigation intérieure
Pôle navigation intérieure
123, rue de Roubaix - CS 20839
59500 DOUAI
Tél. : 03 27 94 55 60
ddtm-dmlni-douai@nord.gouv.fr

DRIEA
Département de la sécurité
des transports fluviaux
21-23, rue Miollis - 75015 PARIS Tél.
: 01 40 61 89 60
SN-Seine@developpement-durable.gouv.fr

DDT du Bas-Rhin
Pôle navigation
14, rue du maréchal Juin
BP 61003 - 67070 STRASBOURG
Cedex - Tél. : 03 88 88 91 00
ddt-pn@bas-rhin.gouv.fr

DDTM de Loire-Atlantique
Service transports - Centre
instructeur de sécurité fluviale
10, boulevard Gaston Serpette
44000 NANTES
Tél. : 02 40 67 26 26
ddtm-cisf@loire-atlantique.gouv.fr

DDT du Rhône
165, rue Garibaldi - CS 33 862
69 401 LYON Cedex 3
Tél. : 04 78 62 52 51
(Immatriculation d'un bateau)
Tél. : 04 78 62 52 53 (Permis de
conduire des bateaux de plaisance
ou duplicatas)
ddt-ptn@rhone.gouv.fr

DDT de la Haute-Garonne
Service des risques et gestion
de crise - Unité navigation
et sécurité
Cité administrative - Bât A -
2, boulevard Armand Duportal
BP 70001 - 31 074 TOULOUSE
Cedex 9 - Tél. : 05 61 10 60 80
ddt-unsf-srgc@haute-garonne.gouv.fr