



Remote Shipmanagement and crew-reduced navigation
www.seafar.eu

Seafar a Shipmanagement Company

With a focus on inland waterborne transport (IWT)

1. **Crew shortage** as limiting factor
 - Limiting growth of the fleet
 - Limiting earning potential per vessel
 - Quality/ Safety concerns
2. **Investments** needed to meet **sustainability targets**
 - Fleet renewal process slowed down
 - Uncertainty around technological readiness
 - Extended time to achieve positive ROI
3. **Low safety record***
 - 80% of accidents due to human error
 - Overworked crews resulting in unsafe operations



Operating Vessels from Shore Control Centre (SCC)

Unmanned Navigation

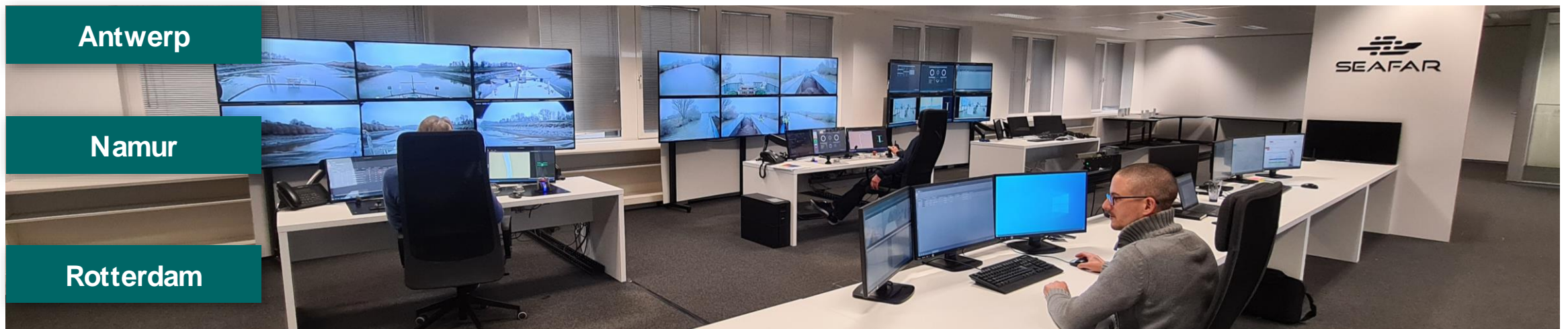
Automated vessels on fixed trajectories, with the goal to solve crew issues.

Crew Supported Navigation

Expand vessel capabilities by integration of the Seafar control system

Crew Reduced Navigation

Operation of vessels manned by reduced crews and the support of the Seafar Shore Control Center.
It applies on 55 – 86 – 110m vessels

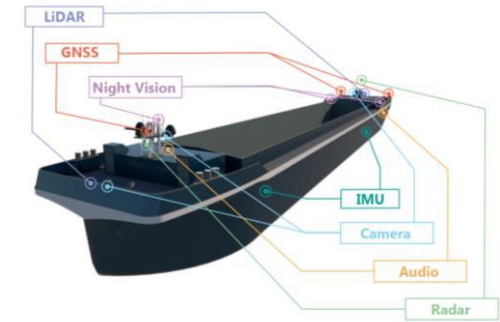
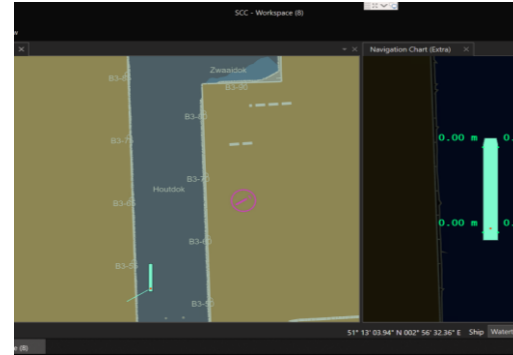


Seafar, Technology as a toolbox

Developing technology for autonomous ship

Seafar Technology is installed Onboard ships and Onshore on the control centre

The Seafar Control System integrates with all onboard systems on both existing vessels or new built.



Successful collaboration with regulators

Joint framework towards issue of permit



MARKET OBSERVATION
INLAND NAVIGATION IN EUROPE

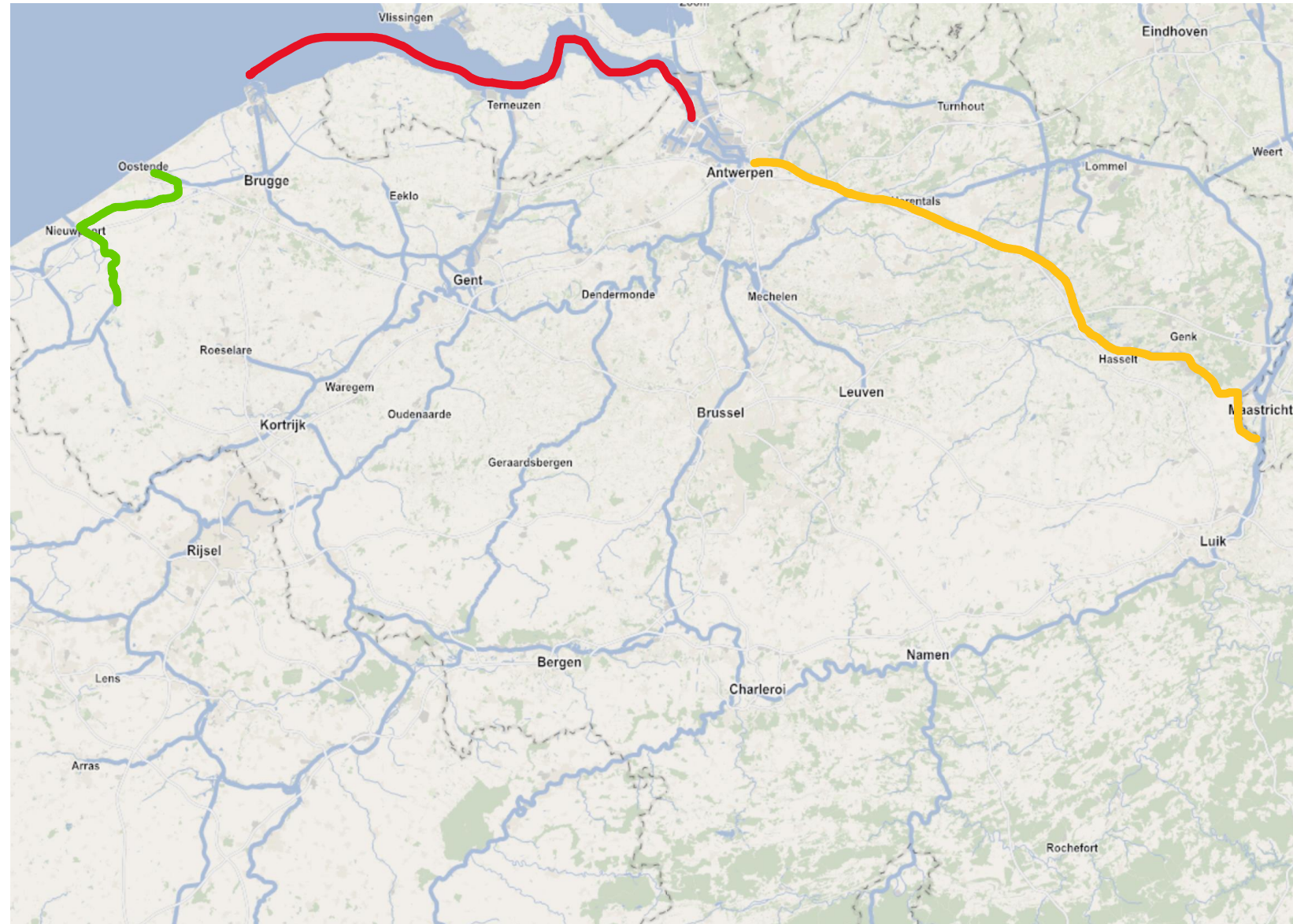


Rijkswaterstaat
*Ministry of Infrastructure
and Water Management*

Regulatory Landscape




Current Operations

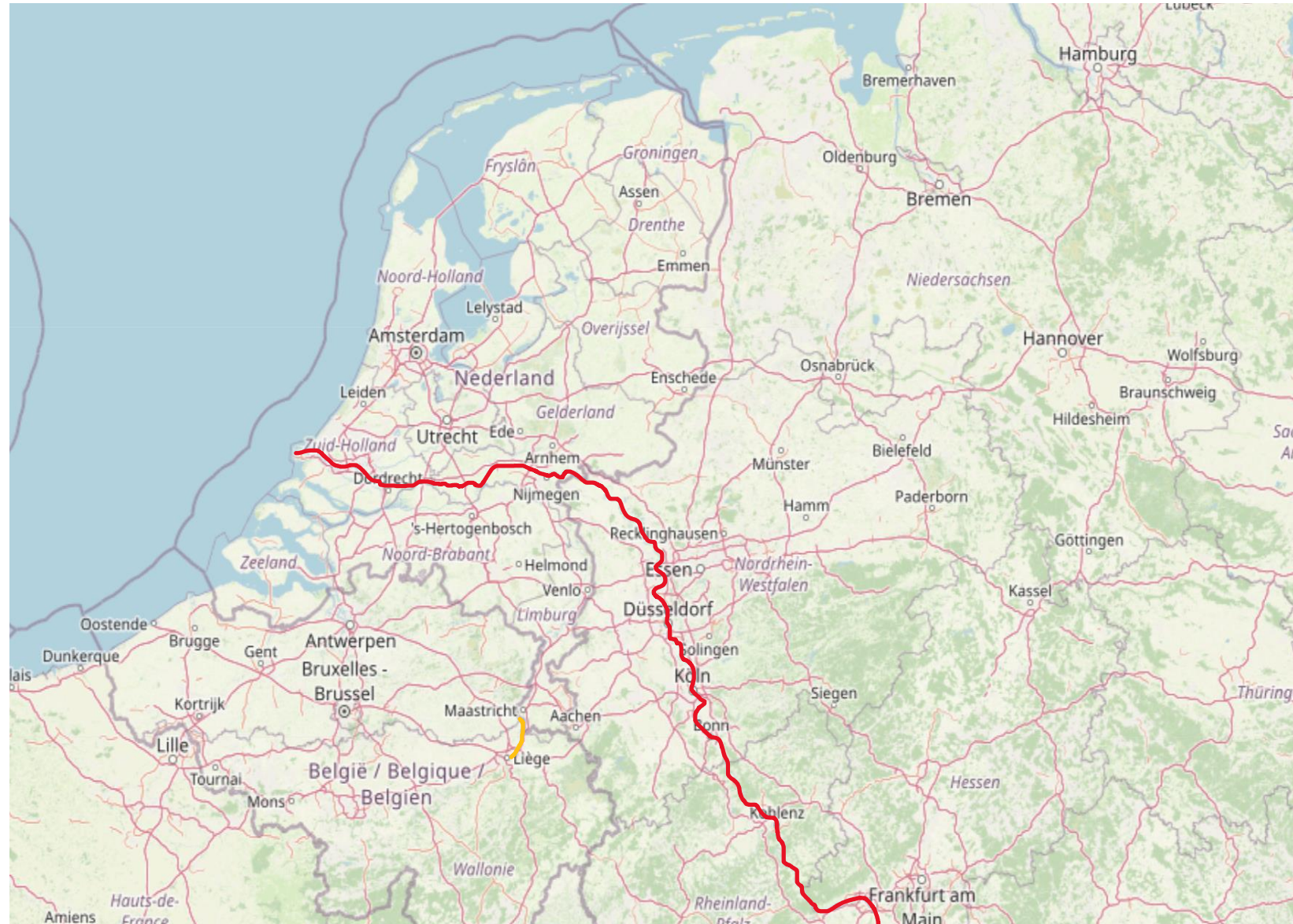
- Remotely operated
- Remotely operated / crew reduced
- Remotely operated / unmanned



Regulatory Landscape

Application stage

-  Remotely operated
-  Remotely operated / crew reduced
-  Remotely operated / unmanned



Seafar, active in R&D projects

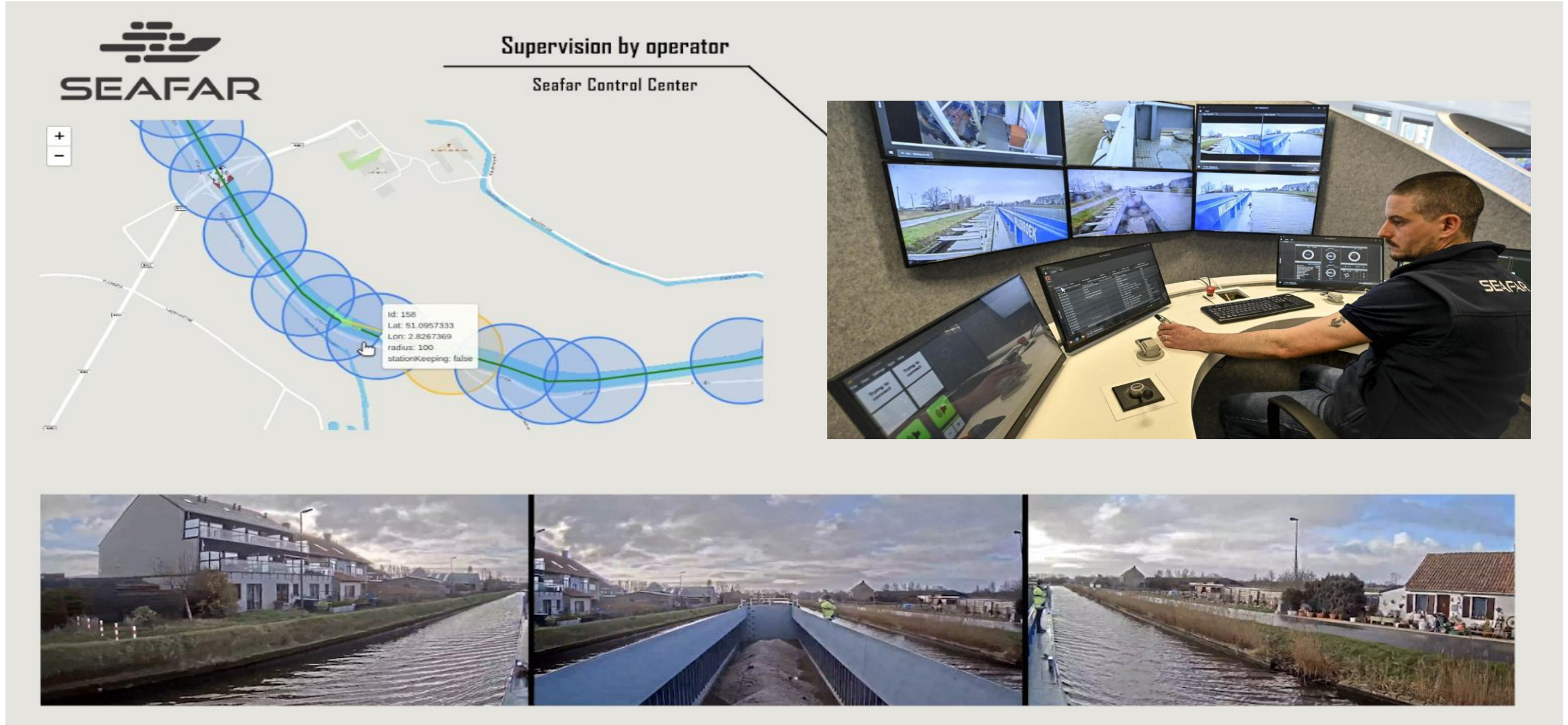
Reginal, European and International



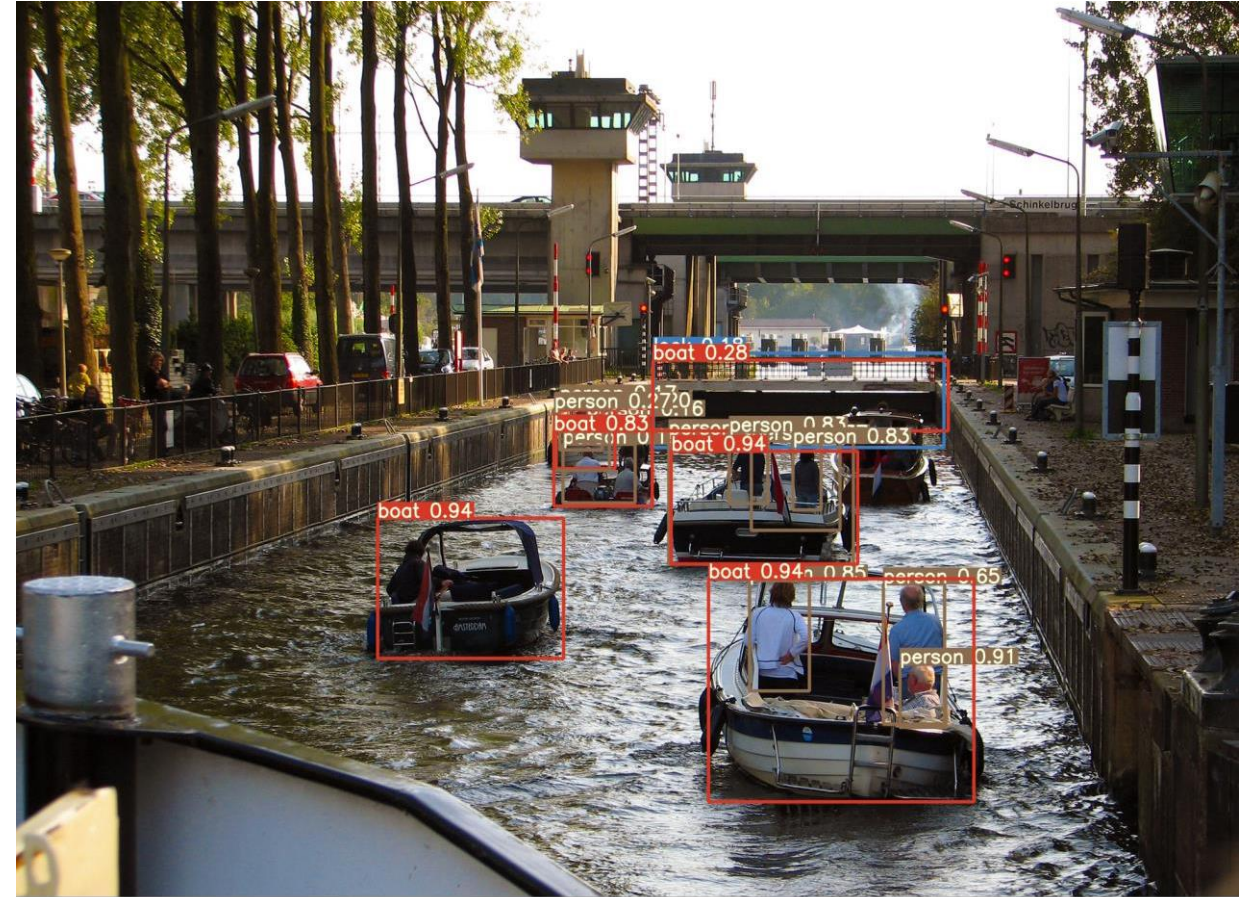
SMASH!



Seafar, some R&D Development for Smart Navigation



Seafar, some R&D Development for Smart Navigation





The best helmsman stand on shore.

Please contact us for more information or cooperations:

Najmeh.masoudi@seafar.eu

www.seafar.eu